

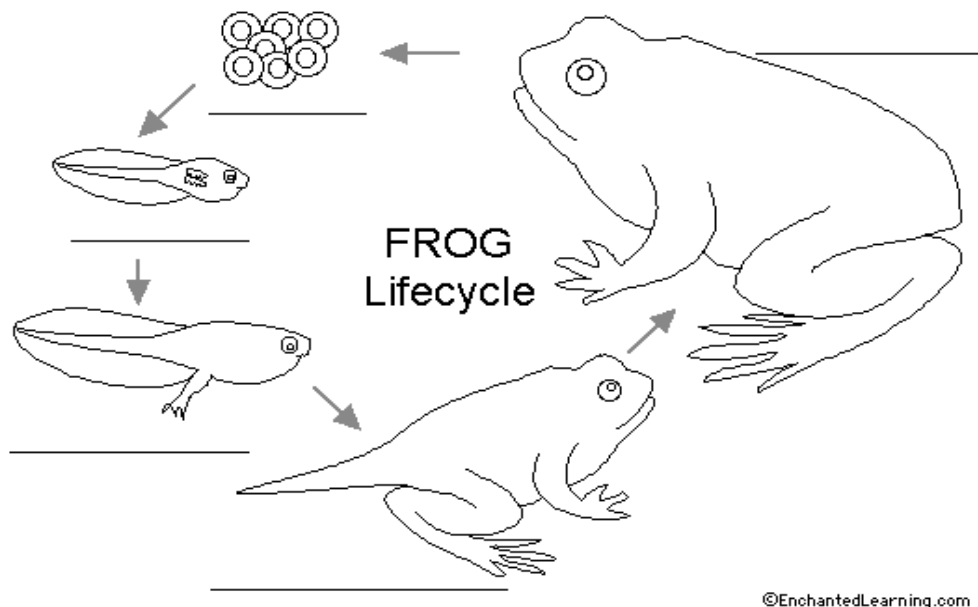
Name: \_\_\_\_\_ Hr. \_\_\_\_\_

## **Amphibians**

Amphibians include **frogs, toads, newts, and salamanders**. Frogs spend part of their lives in water and the remainder on land. They have long, **powerful jumping legs** and a very **short backbone**. Most **frogs** have **teeth** (in the upper jaws only), but toads do not have any teeth.

### **Frog Life Cycle**

Like all amphibians, frogs spend their lives **near water** because they must return to the water to **lay their eggs**. Label and color the eggs red. Label and color the legless tadpole light green. Frog eggs are laid in the water. When they hatch into **tadpoles**, they breathe with **gills** and swim using a **tail**. As they mature, they lose their tail, and they develop **lungs** for breathing air. Label and color the developing frog (legs appear) dark green. Color and label the adult frog brown with a yellow eye. In harsh climates, frogs bury themselves in sand and mud and **hibernate** (sleep very deeply) through the cold winter. Frogs eat insects, catching them with their long, **sticky tongue**. They also eat small fish and worms. Frogs and toads are in the Kingdom **Animalia**, Phylum **Chordata**, Class **Amphibia**, and Order **Anura**.

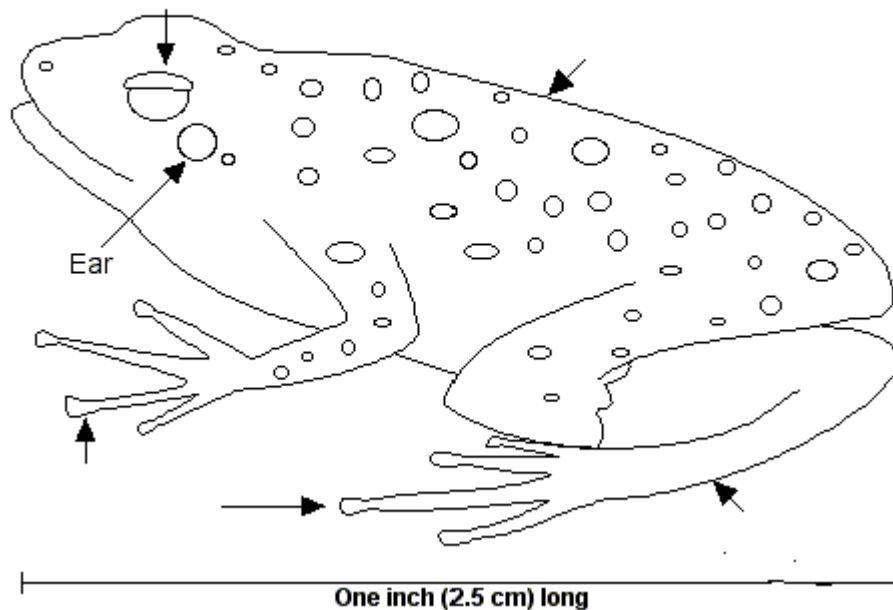


## Poison Arrow Frog

**Poison Arrow Frogs** (also called **Poison Dart Frogs**) are small, brightly colored, **rainforest** frogs that have **extremely poisonous skin**. They have large **black eyes with lids**. Label and color the eyes black. Behind each eye is a large membrane for hearing called the **tympanic membrane**. Label and color the tympanic membrane yellow. The skin is bright red with black dots that acts as a **warning coloration** to potential predators. Label and color the frog's skin. They have glands in the skin that produce strong **toxins**. Their poison is used by some South American Indians for applying to the tips of their hunting arrows and blowgun darts. Like all frogs they have large hind, **jumping legs**. Label and color the front and hind legs orange. The toes have enlarged, **adhesive pads** for gripping onto surfaces.

### Strawberry (Red and Blue) Poison Arrow Frog

*Dendrobates pumilio*

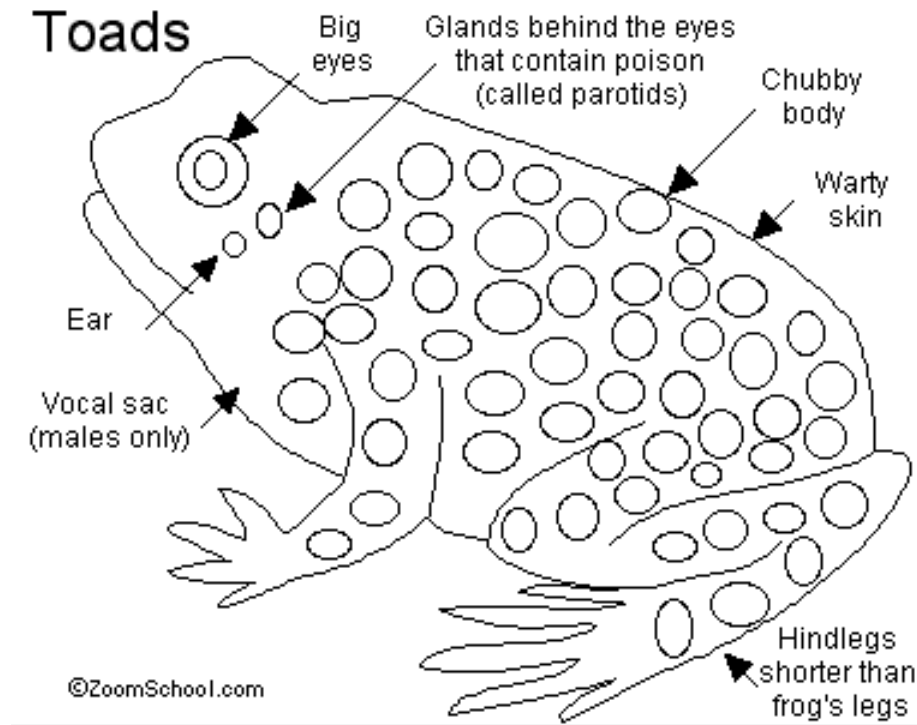


Copyright ©2006-2009 EnchantedLearning.com

## Toads

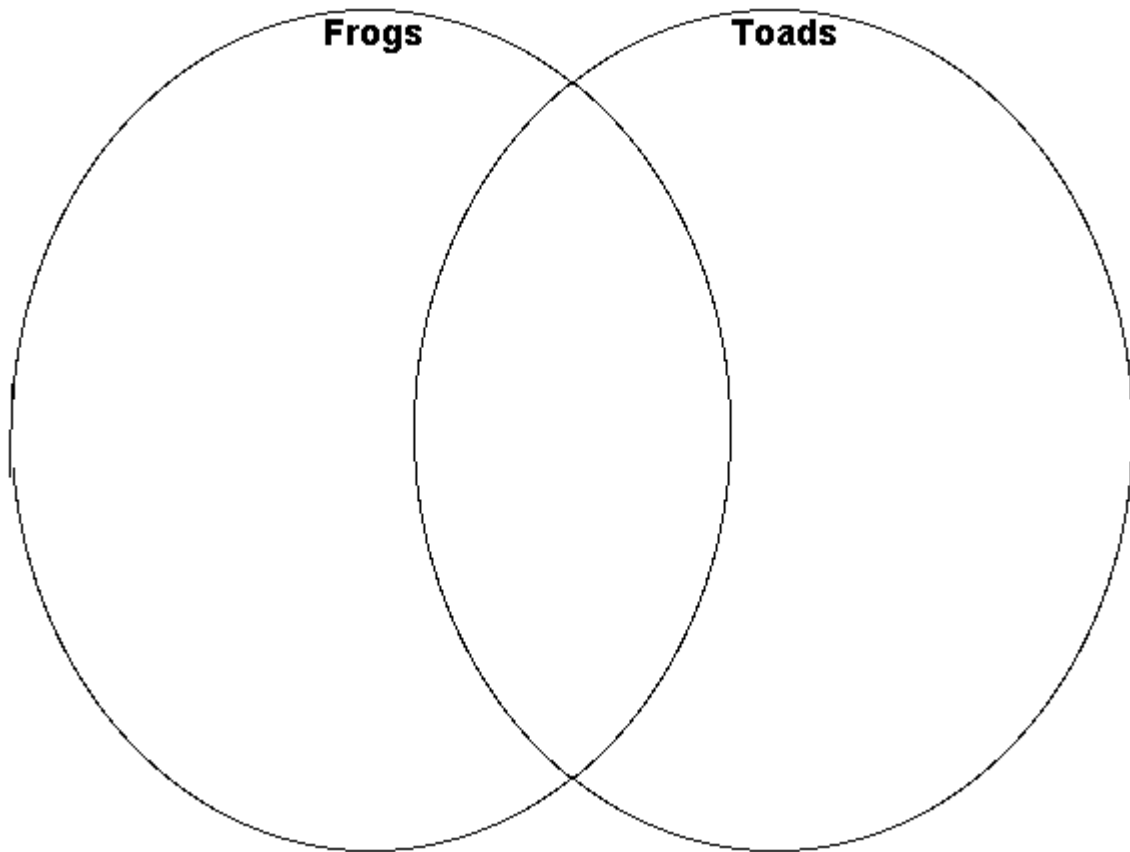
**Toads** are amphibians, animals that spend the early part of their lives under water (as eggs and tadpoles) and the remainder on land. These **nocturnal** animals hunt at night and spend the day sheltered in a cool spot. Toads spend **less time in the water** than frogs. Toads are found **all over the world except polar environments and Australia**. Toads have **poison glands** (called **parotids**) behind their eyes, a chubby body, and **shorter legs** than frogs. Toads have **NO** teeth,

and most toads have **warty skin**. The largest toads are over 8 inches (20 cm) long. **Females are larger than males**.



*Use the characteristics* from the table below to complete the Venn diagram on frog and toad similarities and differences.

<b>Are amphibians</b>	<b>Have a brain</b>	<b>Hatch from eggs</b>
<b>Have a backbone</b>	<b>Dry, warty skin</b>	<b>Have a heart</b>
<b>Adults have lungs</b>	<b>Slimy, smooth skin</b>	<b>Poison glands behind eyes</b>
<b>The young have gills</b>	<b>Lay eggs in clusters</b>	<b>Have no teeth</b>
<b>Jump</b>	<b>Lay eggs in chains</b>	<b>Have teeth in top jaws</b>
<b>Walk</b>	<b>Bulging eyes</b>	<b>The young live in water</b>



Frogs are \_\_\_\_\_ animals that spend part of their lives under water and the remainder on \_\_\_\_\_. They have long, powerful jumping \_\_\_\_\_ and a very short backbone. Most frogs have teeth (but \_\_\_\_\_ do not).

**Life cycle:** Like all amphibians, frogs spend their lives near water because they must return to the water to lay their \_\_\_\_\_. Frog eggs are laid in the \_\_\_\_\_, and they hatch into \_\_\_\_\_. Tadpoles breathe with \_\_\_\_\_ and swim using a long \_\_\_\_\_. As they mature into adult \_\_\_\_\_, they lose their \_\_\_\_\_, and they develop \_\_\_\_\_ for breathing air. In harsh climates, frogs bury themselves in sand and \_\_\_\_\_, and \_\_\_\_\_ (sleep very deeply) through the cold \_\_\_\_\_.