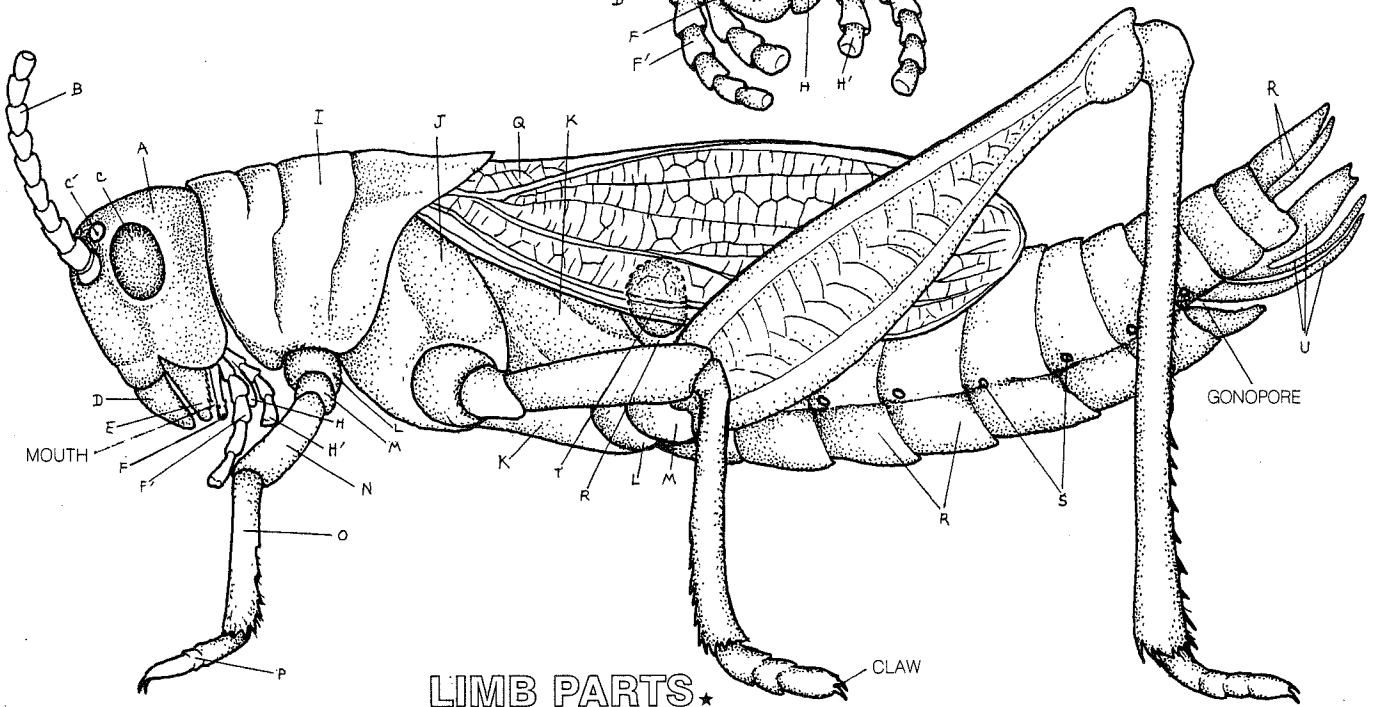
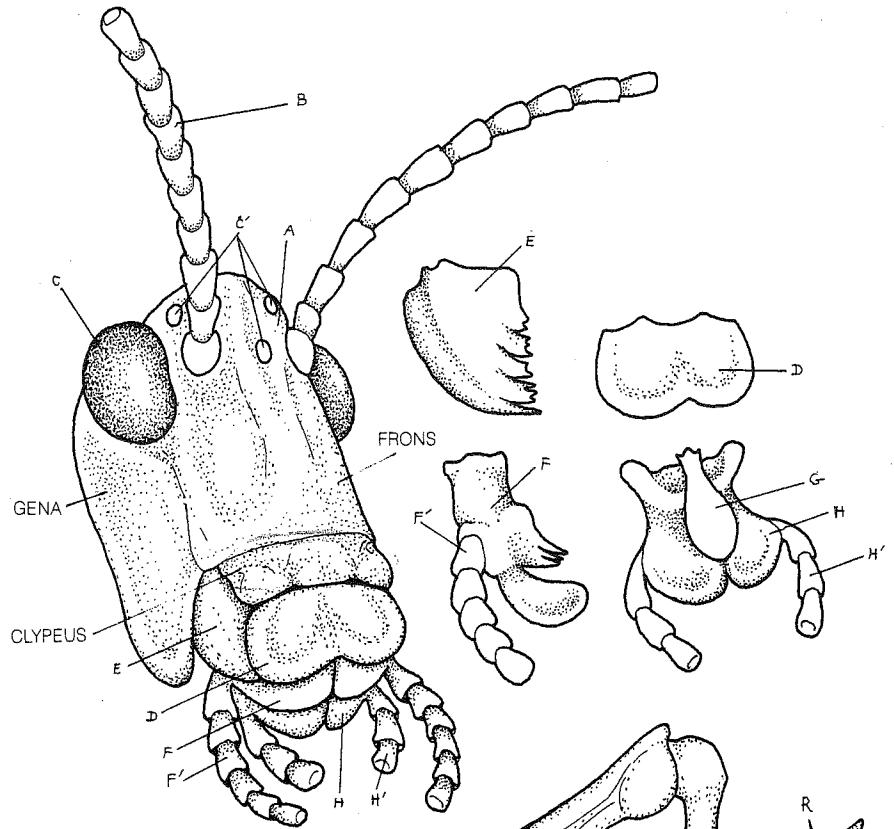


GRASSHOPPER: I EXTERNAL STRUCTURE.

HEAD ★
 CAPSULE_A
 ANTENNA_B
 EYES ★
 COMPOUND_C
 SIMPLE_{C'}

MOUTHPARTS ★
 LABRUM_D
 MANDIBLE_E
 MAXILLA_F
 PALP_{F'}
 HYPOPHARYNX_G
 LABIUM_H
 PALP_{H'}



THORAX ★
 PROTHORAX_I
 MESOTHORAX_J
 METATHORAX_K

LIMB PARTS ★
 COXA_L
 TROCHANTER_M
 FEMUR_N
 TIBIA_O
 TARSUS_P

ABDOMEN ★
 SEGMENTS_R
 SPIRACLES_S
 AUDITORY MEMBRANE_T
 OVIPOSITOR_U

FOREWING_K