

# GRASSHOPPER: II INTERNAL STRUCTURE.

## DIGESTIVE SYSTEM ★

### FOREGUT ★

- MOUTh<sub>A</sub>
- SALIVARY GLAND/DUCT
- PHARYNX<sub>C</sub>
- ESOPHAGUS<sub>D</sub>
- CROP<sub>E</sub>
- GIZZARD<sub>F</sub>

### MIDGUT<sub>G</sub>

#### CECUM<sub>G'</sub>

### HINDGUT ★

- ANT. INTESTINE<sub>H</sub>
- POST. INTESTINE<sub>I</sub>
- ANUS<sub>J</sub>

## EXCRETORY SYSTEM ★

### MALPIGHIAN TUBULES<sub>K</sub>

## CIRCULATORY SYSTEM ★

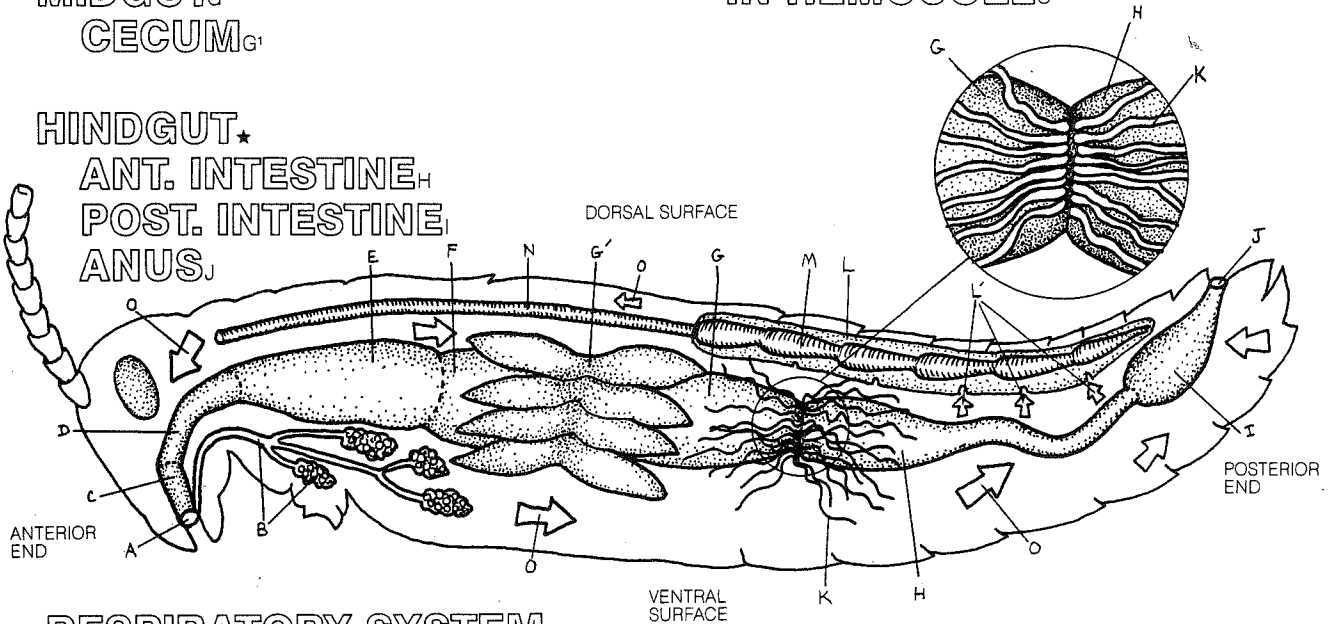
### PERICARDIAL CAVITY

#### OSTIA<sub>L</sub>

### HEART<sub>M</sub>

### AORTA<sub>N</sub>

### DIRECTION OF FLOW IN HEMOCOEL.



## RESPIRATORY SYSTEM ★

### SPIRACLE<sub>P</sub>

### TRACHEA./TRACHEOLE<sub>Q</sub>

### AIR SAC ★

#### CEPHALIC<sub>R</sub>

#### THORACIC<sub>R<sup>1</sup></sub>

#### ABDOMINAL<sub>R<sup>2</sup></sub>

