

Directions:

1. Write the Chromosomes Smear number at the top of your Karyotype paper next to your name.
2. Cut out all of your Chromosomes from your smear. Some of you will have more than 46 chromosomes or you may be missing one of your 46. This is correct.
3. Match up Chromosomes based on, 1. Size and 2. Band Pattern.
4. Place the paired chromosomes in the correct position on your Karyotype sheet. Some of you may have more than 2 chromosomes for one position. Use the examples on the back of this paper to assist you.
5. Once you have all 23 spots figured out, glue down your chromosomes and determine if you have a male or female and if you have any extra chromosomes. Write this information at the bottom of your Karyotype Sheet.
6. Clean up your table and floor area and return your scissors and glue to the correct trays.

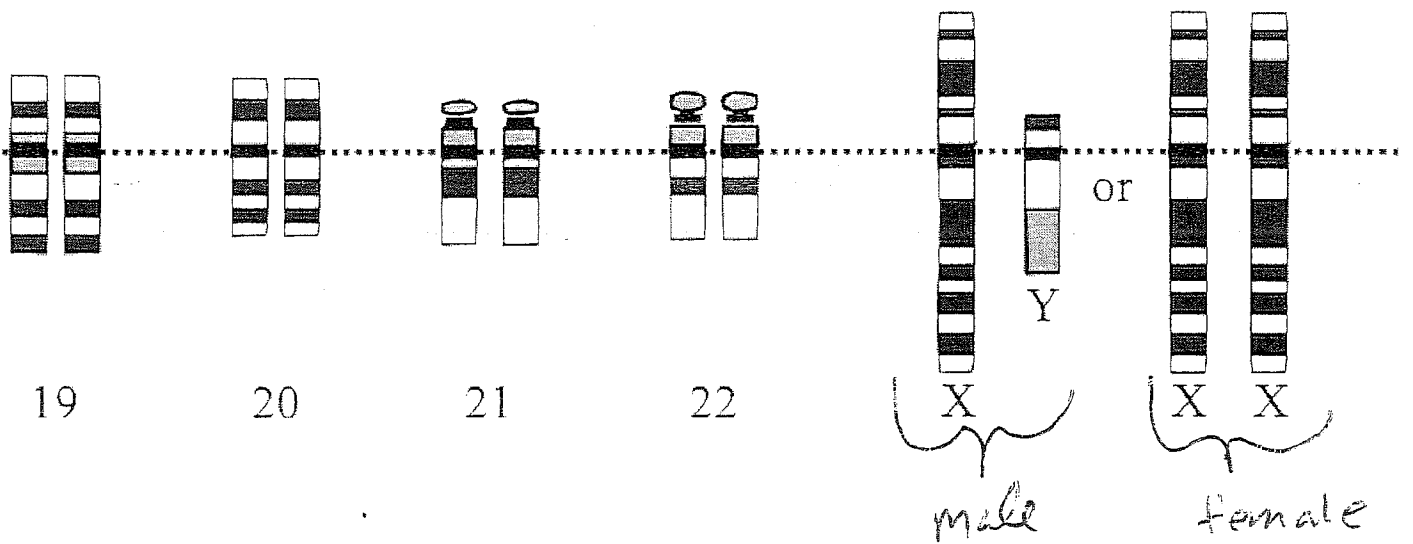
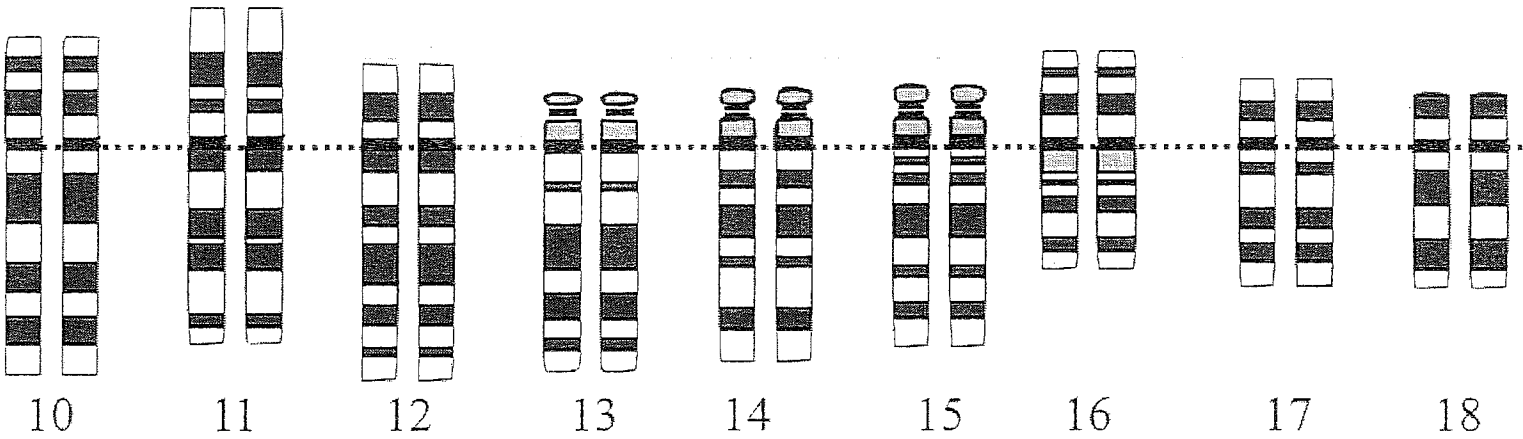
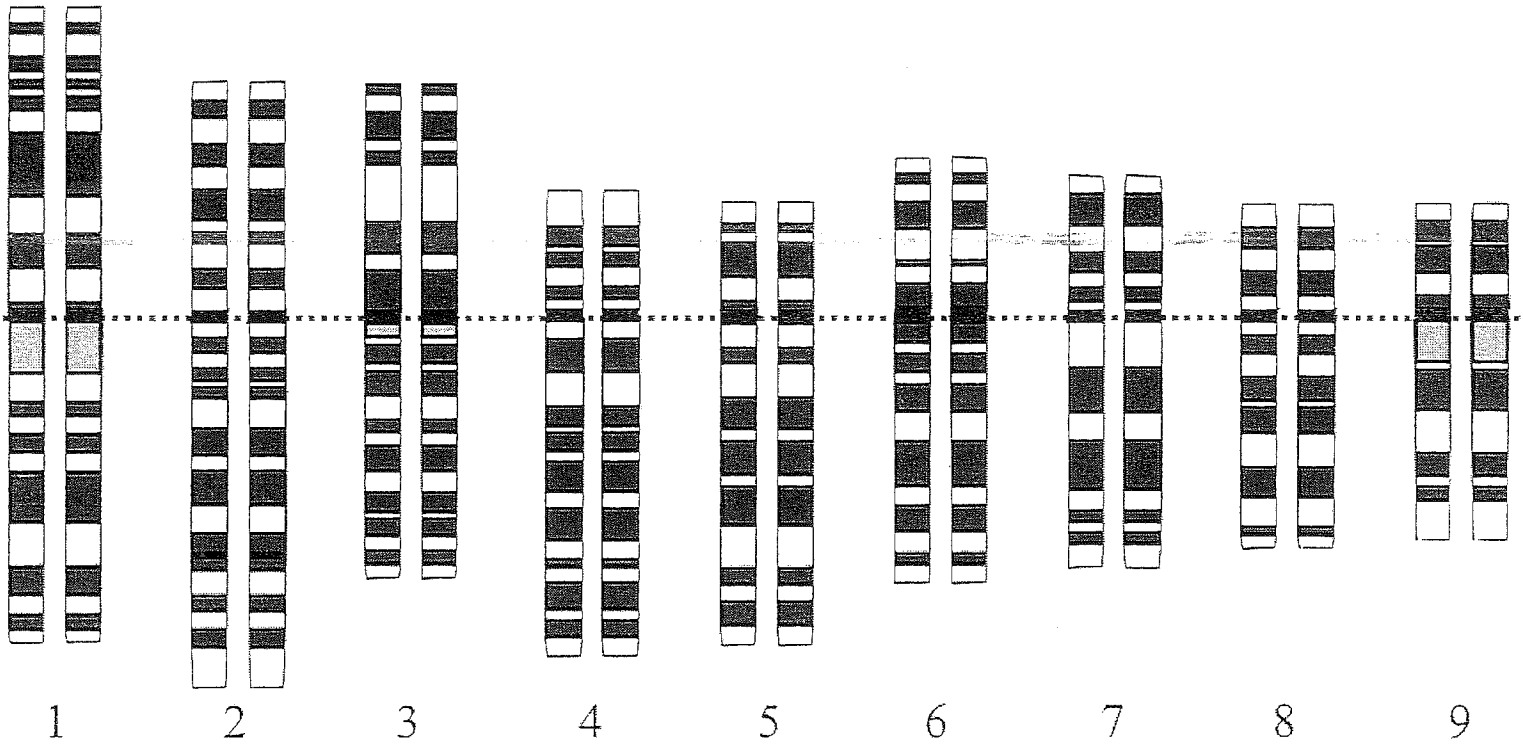
Karyotype Placement Grid

Chromosome Smear # _____

NAME _____

Date _____

1	2	3	4		5		
6	7	8	9	10	11	12	
13	14	15	16	17	18		
19	20	21	22		X	Y	



Chromosome Smear 2



Copyright © Education Development Center