

SHARK: II.

CIRCULATORY SYSTEM.

HEART*

SINUS VENOSUS_A

ATRIUM:

VENTRICLE.

CONUS ARTERIOSUS.

VENTRAL AORTA:

AFF. BRANCHIAL A._{E1}

EFF. BRANCHIAL A._F

DORSAL AORTA_{F1}

SUBCLAVIAN A._{F2}

CELIAC A._{F3}

ILIAC A._{F4}

CAUDAL A._{F5}

POST. CARDINAL V._{E2}

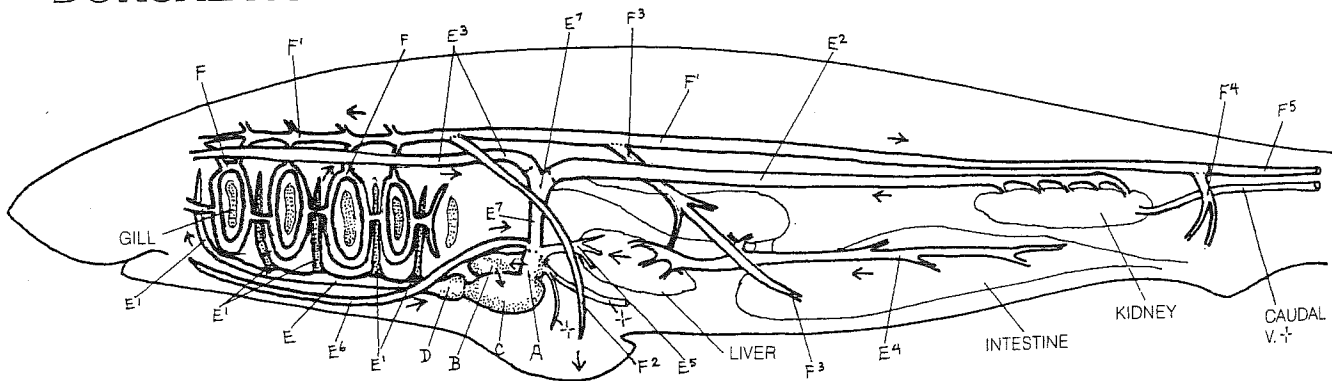
ANT. CARDINAL V._{E3}

HEPATIC PORTAL V._{E4}

HEPATIC V._{E5}

JUGULAR V._{E6}

COMMON CARDINAL V._{E7}



NERVOUS SYSTEM.

BRAIN*

TELENCEPHALON*

OLFACTORY BULB.

CEREBRAL HEMISPHERE_H

DIENCEPHALON*

EPITHALAMUS.

INFUNDIBULUM.

PITUITARY GL._K

MESENCEPHALON*

OPTIC LOBE.

METENCEPHALON*

CEREBELLUM_M

MYELENCEPHALON*

MEDULLA OBLONGATA_N

SPINAL CORD.

PERIPHERAL NERVOUS

SYSTEM*

CRANIAL NERVES_P

SPINAL NERVES.

